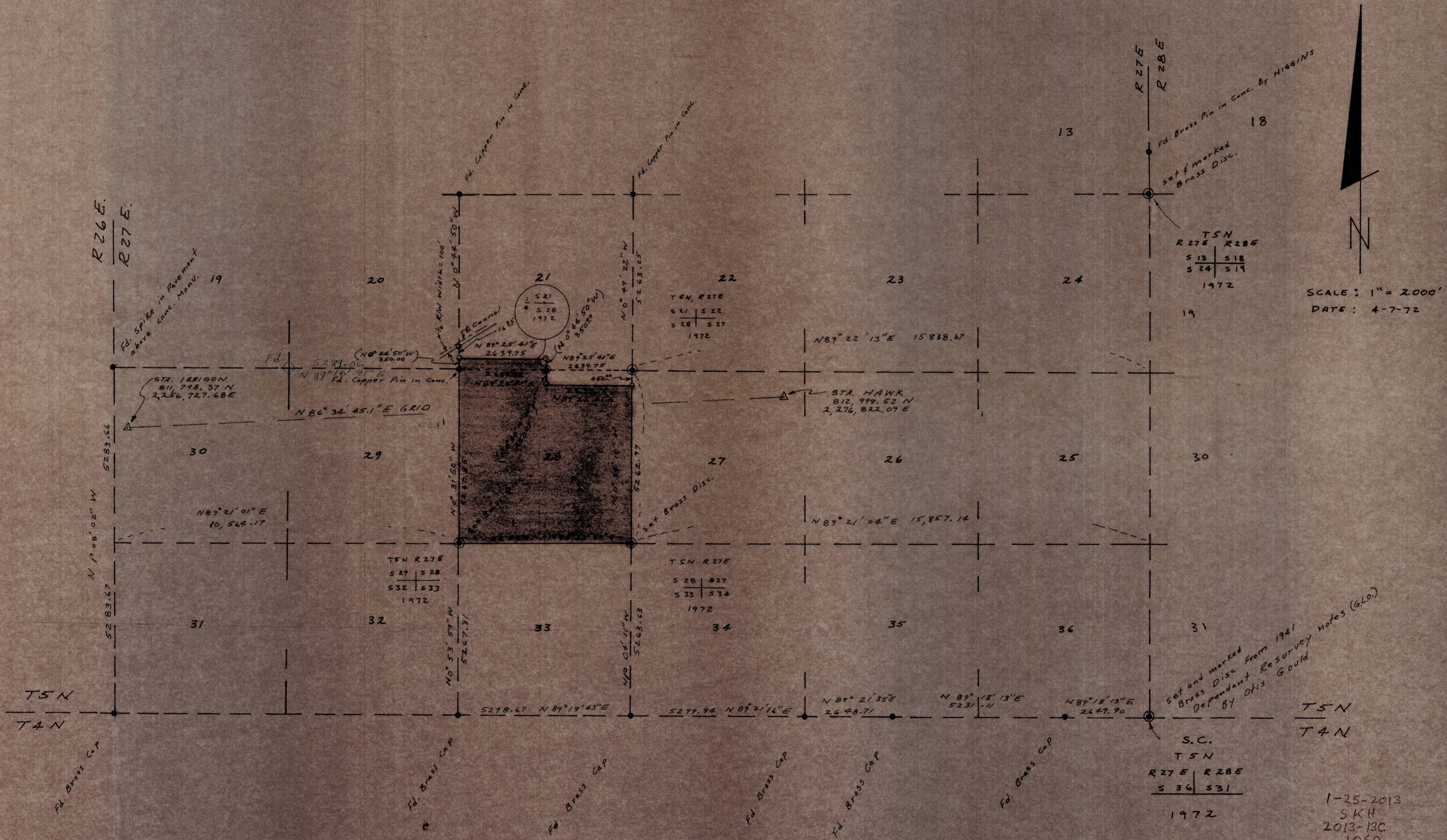
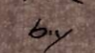


T 5 N, R 27 E.W.M.



SCALE: 1" = 2000'
DATE: 4-7-72

NOTES:

1. All bearings are Grid bearings based on Oregon Coord. System North Zone.
2. The N.E. Corner, S.E. Corner & S.W. Corner was set by Double proportionate distance method. (Section 28)
3. N.E. Corner of section 24 was set by Single proportionate method.
4. All six brass discs set in 2" x 36" iron pipe and stamped as shown.
5. The monuments set as shown by this symbol  are 2"x36" Iron Pipe with Hub & nail in top. There are 5 such monuments. One of these monuments set marks the intersection of the west line of Section 21 and the southerly R/W line of the Irrigation Canal. (200' R/W)



SURVEY FOR HOWARD STONE
STONE HERFORD RANCH
HERMISTON, OREGON
BY
DONALD L. STAEBLER
CONSULTING ENGINEER
P.O. BOX 91
PENDLETON, OREGON

1-25-2013
SKH
2013-13C
1069